



# Welcome to The UCL Academy

I am delighted to welcome you to the first prospectus for the UCL Academy, a brand-new, mixed, 11-18 comprehensive school located in Swiss Cottage in Camden.

Working with our sponsor, UCL, we will build an inspiring school which supports young people to develop as individuals and to set and achieve high targets for themselves.

The UCL Academy will provide its students with an education for global citizenship by:

- Establishing a strong learning culture with excellent, creative and imaginative teaching across the curriculum;
- Putting emphasis on independent learning, student choice and programmes of study which are tailored to the individual's interests, aspirations and progress to date;
- Reviewing students' learning and progress on a regular basis;
- Giving each student mentoring support to ensure they make positive decisions about their academic career.

The Academy will open in the autumn term of 2012 with 180 students in Year 7 and 125 students in Year 12. It will reach its full capacity of 1150 students by the autumn of 2016.

I hope that this prospectus gives you a good overview of the kind of education that we can offer your child. We will be posting more information on our website as the year progresses, and as we appoint key staff to the school. We also have an email address for any questions you may have.

Enquiries address: [enquiries@uclacademy.com](mailto:enquiries@uclacademy.com)

Website: [www.uclacademy.com](http://www.uclacademy.com)

Thank you very much for your interest in the UCL Academy!

**Geraldine Davies**

Principal, The UCL Academy

We will build an inspiring school which supports young people to develop as individuals.





UCL was the first university in England to admit students of any race, class or religion.

## About the **sponsor**

UCL is one of the top universities in the UK and among the top universities in the world. It has extensive, world-class facilities and employs some of the world's leading academics. UCL was the first university in England to admit students of any race, class or religion, and the first to welcome women on equal terms with men. It is fully committed to equality of education for all.

UCL will support the Academy by providing master-classes, seminars and summer schools for Academy students, given by UCL staff and making use of UCL's laboratory, library and other teaching facilities. These will build on the teaching undertaken in class and help to extend students' understanding of core topics. They will also help to prepare older students for the transition from school to university teaching.

Additionally, UCL will draw on its existing networks of UCL student mentors and tutors to provide role models, classroom assistants and sources of informal advice and guidance to younger students at the Academy.

UCL's academics will also work with staff at the UCL Academy to extend and develop the school curriculum in exciting ways informed by the latest research.



Lessons will focus on  
real-world issues and ideas.



UCL will support the Academy by providing master-classes, seminars and summer schools for Academy students.

# The UCL Academy: Our Ethos and Values

The UCL Academy will be an extremely exciting, stimulating place to learn.

**Learning:** The UCL Academy will offer a 21st century curriculum which will prepare students for their future lives and responsibilities as individuals, employees and citizens. Learning in the Academy will focus on problem-solving and skills development, with lessons that explore real-world issues and ideas. Students will have extensive opportunities to undertake project work and to participate in community activities, internships and international exchanges.

**Community:** Staff and students at the Academy will work together to create a friendly, inclusive and supportive environment. Students will be encouraged to develop friendships across year groups, and will be supported individually and in mixed-age groups by a staff mentor. Through these mentor groups, students will build strong support networks to enable them to tackle the challenges they will encounter during their time at the Academy. The five school houses will provide a focus for intra-school activities, including competitions and school sport.

**Sponsor support:** UCL, as sponsor, will provide a comprehensive programme of activities and support to enhance teaching at the Academy. This will include lectures and masterclasses from UCL academics in subjects across the curriculum and visits to UCL to explore the university's extensive resources, including laboratories and libraries. There will also be advice for Key Stage 4 students and sixth formers on routes into further and higher education, including support with the higher education entry process from UCL admissions tutors and contact with UCL students acting as tutors and mentors.

# Learning and Teaching at the Academy

## Education for Global Citizenship: the Academy student experience

The UCL Academy will prepare students to respond to the intellectual, social and personal challenges that they will encounter throughout their future lives and careers. The school curriculum and school ethos will shape students' understanding of their social responsibilities and what it means to be a global citizen.

Courses will have a strong emphasis on social context, and the school will establish curriculum links with partners across the world.

Academy students will be encouraged to volunteer locally, and to contribute to decision-making within the Academy.

## Progression through the Academy: levels-based learning

The UCL Academy will allow students to progress at their own pace, and to make choices about how they learn and the programme of study they follow. A stimulating, innovative curriculum, combined with an emphasis on high standards of behaviour, will facilitate students' academic progress. Students will also acquire the skills they need to develop as independent learners.

Students will take courses at Levels 1, 2 and 3 when they are ready, rather than when they have reached a certain age.

This flexible structure will mean that students can take GCSEs early or receive additional support in a particular subject over a longer period of time. Most students are likely to be enrolled on Level 1 and Level 2 courses between the ages of 12 -16 and Level 2 and Level 3 courses between the ages of 15 -18. We expect that most students will follow courses in English and Maths and Science at GCSE at either age 14 or age 15.

### Foundation Year (age 11-12)

In their first year at the Academy, students will be supported to adapt to the Academy's unique learning environment, and will prepare themselves to take responsibility for developing their own programme of study in the years ahead. Foundation Year students will work with their teachers to consolidate their literacy and numeracy skills, and will take part in a variety of cross-curricular projects.

Students aged between 11 and 16 will be required to take courses each year in Maths, Science and a modern foreign language.

Minimum entry requirements will be set for each level and for particular courses.

### Levels-based learning (age 12-19)

After the Foundation Year, students will begin to make choices about which courses they follow, and to create programmes which correspond to their own interests and ambitions. To make this possible, the Academy will run courses at three different Levels:

**Level 1 – pre-GCSE**

**Level 2 – GCSEs and equivalents**

**Level 3 – AS / A2 and equivalents**

The Academy will offer a full programme of courses, including art, music, drama, languages, the humanities and PE. All students will be encouraged to follow a balanced programme with a range of courses in each year.

The UCL Academy will take an exciting, hands-on approach to the teaching of maths and science.

## Our specialisms: Maths and Science

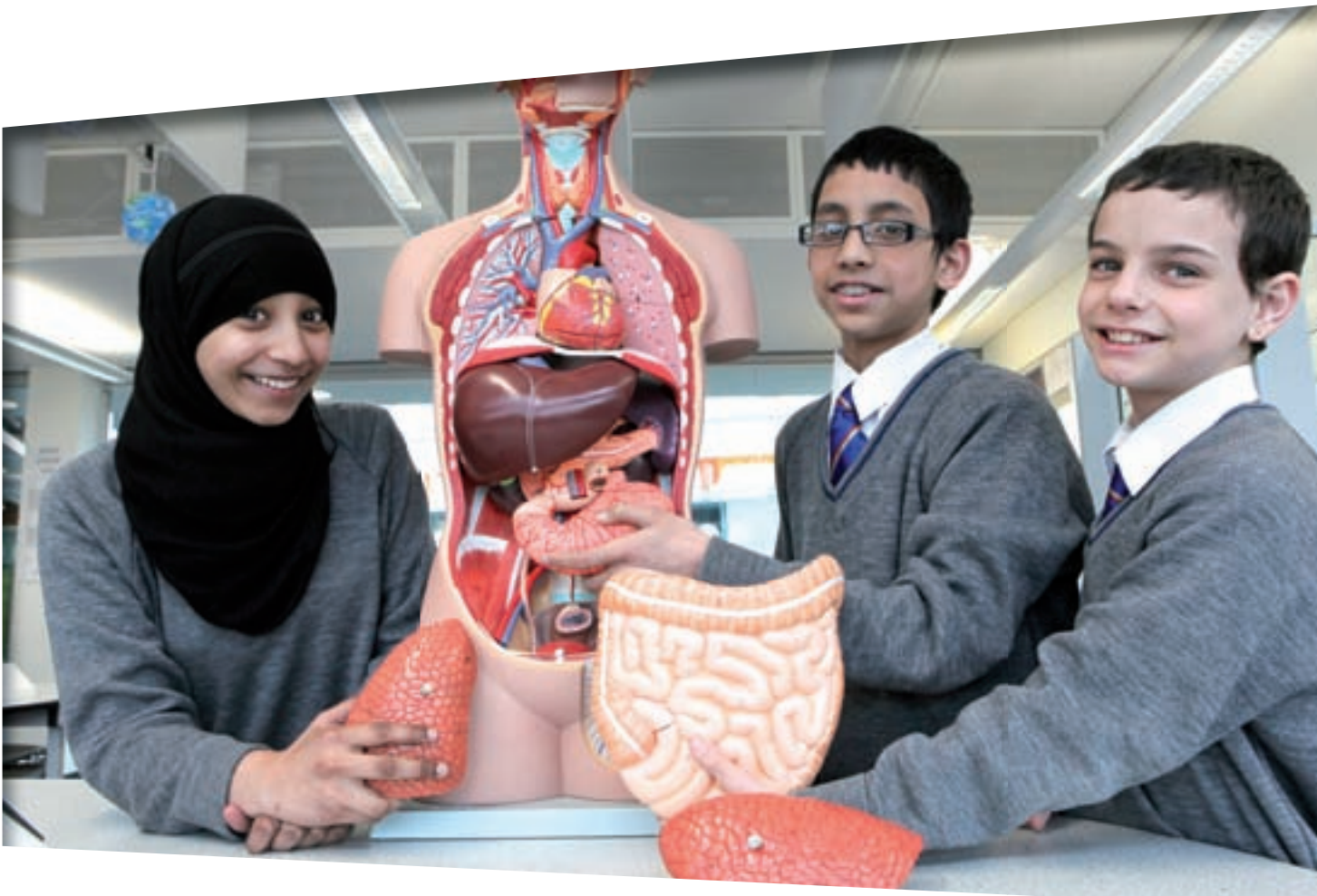
The UCL Academy will teach maths and science in an exciting, hands-on way. Students will apply their theoretical knowledge to real-world problems, and experiments will be an important part of every science course. The school will have state-of-the-art science facilities, including a demonstration theatre which will allow UCL's scientists and Academy staff to stage interactive experiments. Students will also have the opportunity to visit laboratories at the university.

The Academy will also pioneer engineering science as a school subject. This will bring together the D&T curriculum and the physics curriculum to give students a real understanding of engineering and how it shapes the world in which we live.

## Special Educational Needs

Students who have been identified as having special educational needs, or who require particular stretch and challenge, will be supported to build a tailored programme of study. This process will be facilitated by the Academy's levels-based approach to the curriculum and to the timetable.

All students' progress will be carefully monitored, and students will work with their staff mentor to ensure that their programmes of study are challenging and appropriate.



# The Academy community:

## supporting every student's development

### Pastoral support: the house system and mentor groups

Every student in the Academy will belong to one of the five UCL Academy houses. Additionally, they will be part of a smaller 'mentor group' of around 10-15 students, led by a member of staff. These mentor groups will allow individuals to build constructive relationships with older and younger students, to be guided by an individual member of staff and to take responsibility for their own learning and their place within the school.

Students from the university will also act as 'buddies' for UCL Academy students. These buddies will support younger students' progress in the classroom and be a friendly source of guidance for them with any other concerns. This contact will also help to raise students' aspirations and to encourage them to set their sights high for their future lives and careers.

### Behaviour

The UCL Academy will have clear sanctions and rewards with a strong emphasis on rewarding positive behaviour and attitudes. Students will be expected to adopt a professional attitude to learning and to be respectful to all members of the school community.

Staff at the UCL Academy will work closely with parents to ensure high standards of behaviour, including excellent levels of attendance and punctuality, and to ensure that homework and uniform policies are followed. A home-school agreement is under development. It is essential that parents / carers and students interested in the UCL Academy subscribe to and sign the agreement, which also outlines what the UCL Academy will offer.

### Uniform

Students at the UCL Academy will be required to wear a uniform, including a blazer and tie, to foster pride in the Academy and in the way they present themselves.

The uniform depicted in this prospectus is representative of the style of the UCL Academy's uniform, although the colours and the detail of our uniform have not yet been finalised. We will publish more information about the Academy uniform on our website early in the autumn term.

### Extra-curricular activities: the Academy extended day

The UCL Academy will promote a broad view of achievement, and students will be celebrated for their success in art, cultural activities, sport, music and community service.

The school will offer a comprehensive programme of extra-curricular activities, as part of an extended day programme. All students will select a number of extra-curricular activities as part of their compulsory programme of study. These sporting, artistic, cultural and social activities will take place in the afternoon, after formal lessons have finished.

Every student will be expected to undertake volunteer work in the community at some point during their time at the school.

Students will be expected to adopt a professional attitude to learning and to be respectful to all members of the school community.

# The UCL Academy **Foundation Year**

Students entering the UCL Academy at age 11 will be members of the Foundation Year.

This year is intended to prepare students for the levels-based structure of later years in the Academy, and to support them through the transition from primary to secondary school.

In this Foundation Year, staff and students will work together to consolidate students' literacy and numeracy skills. This will ensure that students are well-prepared to progress to Level 1 and beyond. Science will feature prominently in students' learning, and every student will study Mandarin Chinese as a modern foreign language.

Much of the Foundation Year curriculum will be based on a new curriculum scheme which encourages students to link their studies in different subjects,

to tackle big themes and ideas and to learn to work independently and collaboratively.

We know that the move to secondary school is a big change for students, and we want to ensure that every UCL Academy student feels welcome and secure from their very first day. Students in the Foundation Year will have most of their lessons in a special area of the school, with its own dedicated external play area, giving them the security of a home base within the bigger Academy community. Additionally, UCL Academy sixth form students will act as buddies and mentors to Foundation Year students, acting as role models and providing an additional source of support at a crucial time.





# The UCL Academy: a state-of-the-art building

The UCL Academy will be housed in brand-new, purpose-built accommodation on Adelaide Road in Swiss Cottage, North London. Our building has been designed specifically to support the curriculum and pastoral structures at the Academy.

The Academy will offer:

- State-of-the-art science laboratories, and a science demonstration theatre for interactive lectures, experiments and talks by visiting academics from UCL;
- An engineering science suite, with workshops and laboratories designed to give students the experience of 'being engineers';
- Suites of rooms for art, music and drama, including well-equipped performance spaces;
- House spaces, providing comfortable, welcoming places for students to eat together, and to use for informal study during breaks and before and after school.

# The UCL Academy: **Superstudios**

The UCL Academy will offer a 21st curriculum that allows students to learn at their own pace, and which encourages them to solve problems, to work in teams, and to be independent learners.

Students at the UCL Academy will have most of their lessons in superstudios. These are learning spaces which have been designed for the Academy's personalised approach to learning, inspired by examples from successful schools in other countries.

A superstudio is a group of linked learning spaces which enables students to move between activities and to work collaboratively. These vibrant and dynamic spaces bring together a mixture of traditional classrooms, small and larger seminar rooms and open learning space and can accommodate many different types of activity at one time. The school's timetable will be designed to maximise the potential of these learning spaces.



There will be five superstudios in the UCL Academy. The Foundation Superstudio will be exclusively for the use of students in their first year, and will include a dedicated external play terrace.

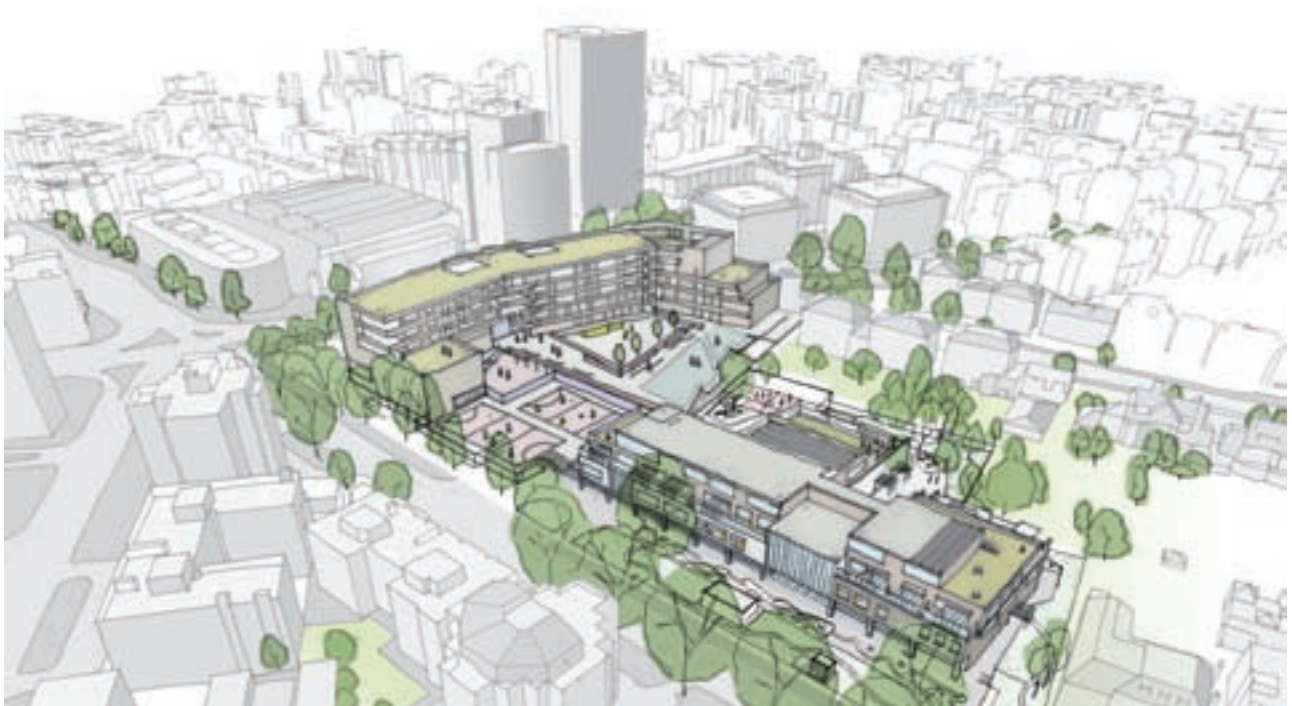
The other superstudios are levels-based. For example, if a student is studying Maths at Level 1, he or she will have those lessons in the Level 1 superstudio.

Academy students will spend at least 60% of their learning time working in superstudios. They will move to the school's specialist facilities (such as the science labs) for more practical, hands-on activity.

# The UCL Academy: **houses**

**Every space in the school belongs to a house, and members of that house are responsible for 'hosting' those facilities for the rest of the school community.**

Each house has its own social space, which contains dining facilities, informal study space and locker storage. This gives all students a physical home base within the school, and will encourage a sense of belonging.







# How to apply

The UCL Academy is a mixed, non-selective 11-18 school. There are no academic entrance requirements for the Academy.

Our admissions criteria are below. You should apply for a place at the UCL Academy through Camden Local Authority, using the Common Application Form. Please do not apply directly to the UCL Academy.

## Admission to Year 7

The Academy plans to admit 180 students each year to Year 7 and will use the Common Application Form, adhering to Camden's admissions timetable. Places will be offered to applicants with a statement of special educational needs naming the school, issued by or with the support of Camden Local Authority. In the event of oversubscription, places will be allocated in the following order of priority:

1. Looked after children
2. Applicants who have a brother or sister at the school who will still be on roll when they join. This can include siblings in the sixth form as long as they are on roll at the same school, and will still be on roll when the other child joins.
3. Applicants who are judged to have an exceptional social or medical need for a place at the school.
4. Other applicants, with priority to those living closest to the school measured in a straight line ('as the crow flies') between the centre of the home and the centre of the school.

Further details about the admissions policy of the Academy can be found at [www.uclacademy.com](http://www.uclacademy.com).

## Post-16 provision

The UCL Academy expects to offer Level 3 programmes from 2012, and to admit 125 students into the school (at the equivalent of Year 12) from that date. There will be approximately 250 students in the Academy equivalent of the Sixth Form (i.e. post-16) once the school is at capacity.

A separate prospectus for post-16 study at the UCL Academy will be published in the 2011 autumn term.

The Academy will provide its students with an 'education for global citizenship'.

For more information about the UCL Academy, including details of open days, please visit our website:  
[www.uclacademy.com](http://www.uclacademy.com)

If you have a question, or to obtain additional copies of this prospectus, please email:  
[enquiries@uclacademy.com](mailto:enquiries@uclacademy.com)

